

Map 1 **Amendment Location** **and the** **Niagara Escarpment Plan**

Amendment No. PH 222 21
 3475 Campbellville (North Pit)
 Town of Milton
 Regional Municipality of Halton

- Area Subject to the Amendment
- Plan Designations**
- Escarpment Natural Area
- Escarpment Protection Area
- Escarpment Rural Area
- Mineral Resource Extraction Area
- Minor Urban Centre
- Niagara Escarpment Parks and Open Space System
- Roads
- Railway - Operational
- Waterbodies
- Watercourse
- Upper Tier Municipality
- Lower/Single Tier Municipality
- Lot and Concession Boundary

NOTE: The Niagara Escarpment Plan Designation boundaries shown on this map are approximate and subject to confirmation through Site Inspection and the application of the 'Interpretation of Boundaries' section of the Niagara Escarpment Plan

Scale 1:25,000
 0 200 400 600 800
 Metres

Printed on Jun 29, 2021

THIS IS NOT A PLAN OF SURVEY.
 This map is illustrative only. Do not rely on it as being a precise indicator of routes, location of features, nor as a guide to navigation. Base derived from various sources.
 Map compiled and produced by the Geographic Information Systems (GIS) Department of the Niagara Escarpment Commission, Ministry of Natural Resources



Map 2

Orthophoto - 2020

Amendment No. PH 222 21
3475 Campbellville (North Pit)
Town of Milton
Regional Municipality of Halton

- Area Subject to the Amendment
- Roads
- Railway - Operational
- Upper Tier Municipality
- Lower/Single Tier Municipality
- Lot and Concession Boundary

Orthophoto Date: 2020

Scale 1:10,000
0 75 150 225 300
Metres

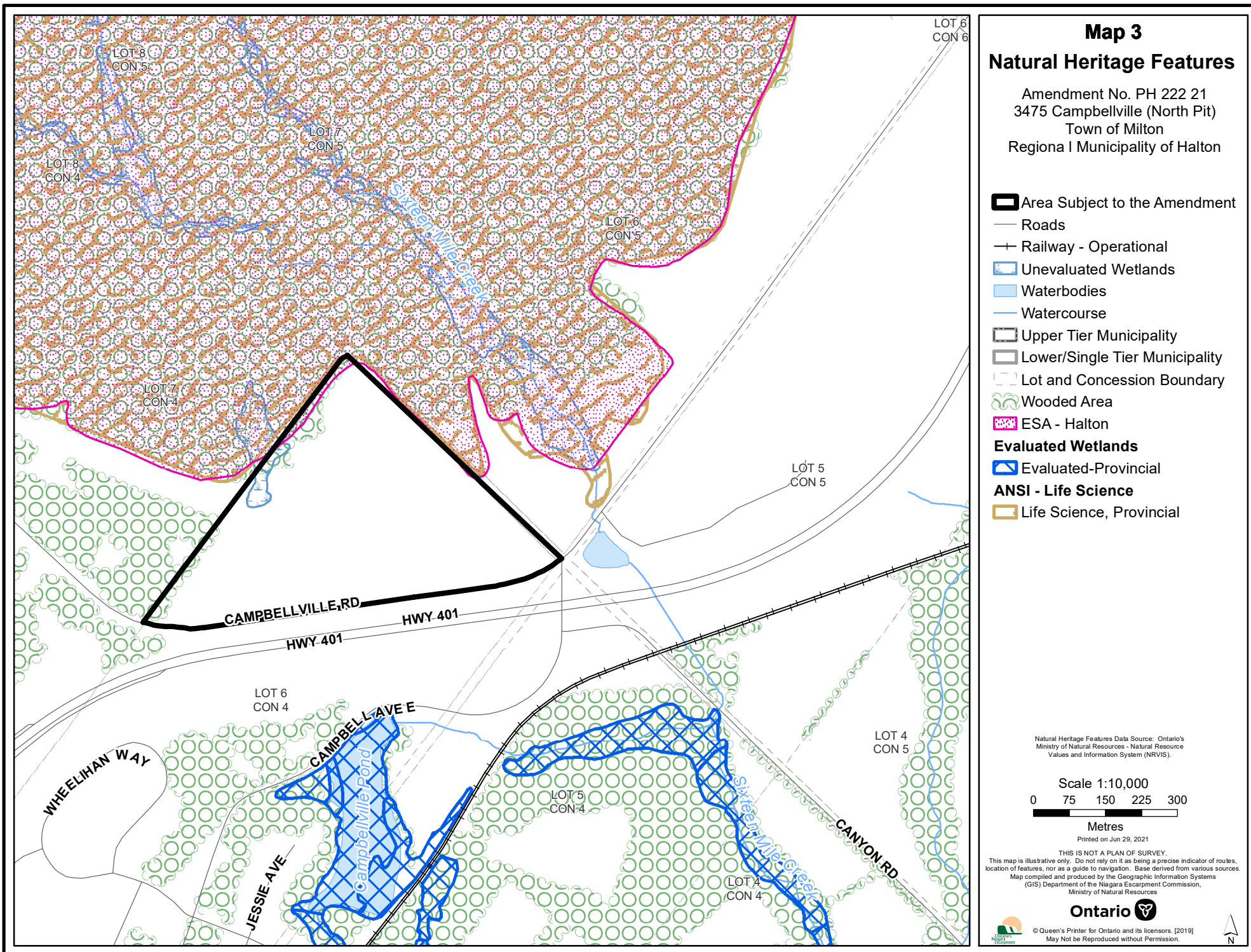
Printed on Jun 29, 2021

THIS IS NOT A PLAN OF SURVEY.
This map is illustrative only. Do not rely on it as being a precise indicator of routes,
location of features, nor as a guide to navigation. Base derived from various sources.
Map compiled and produced by the Geographic Information Systems
(GIS) Department of the Niagara Escarpment Commission,
Ministry of Natural Resources

Ontario

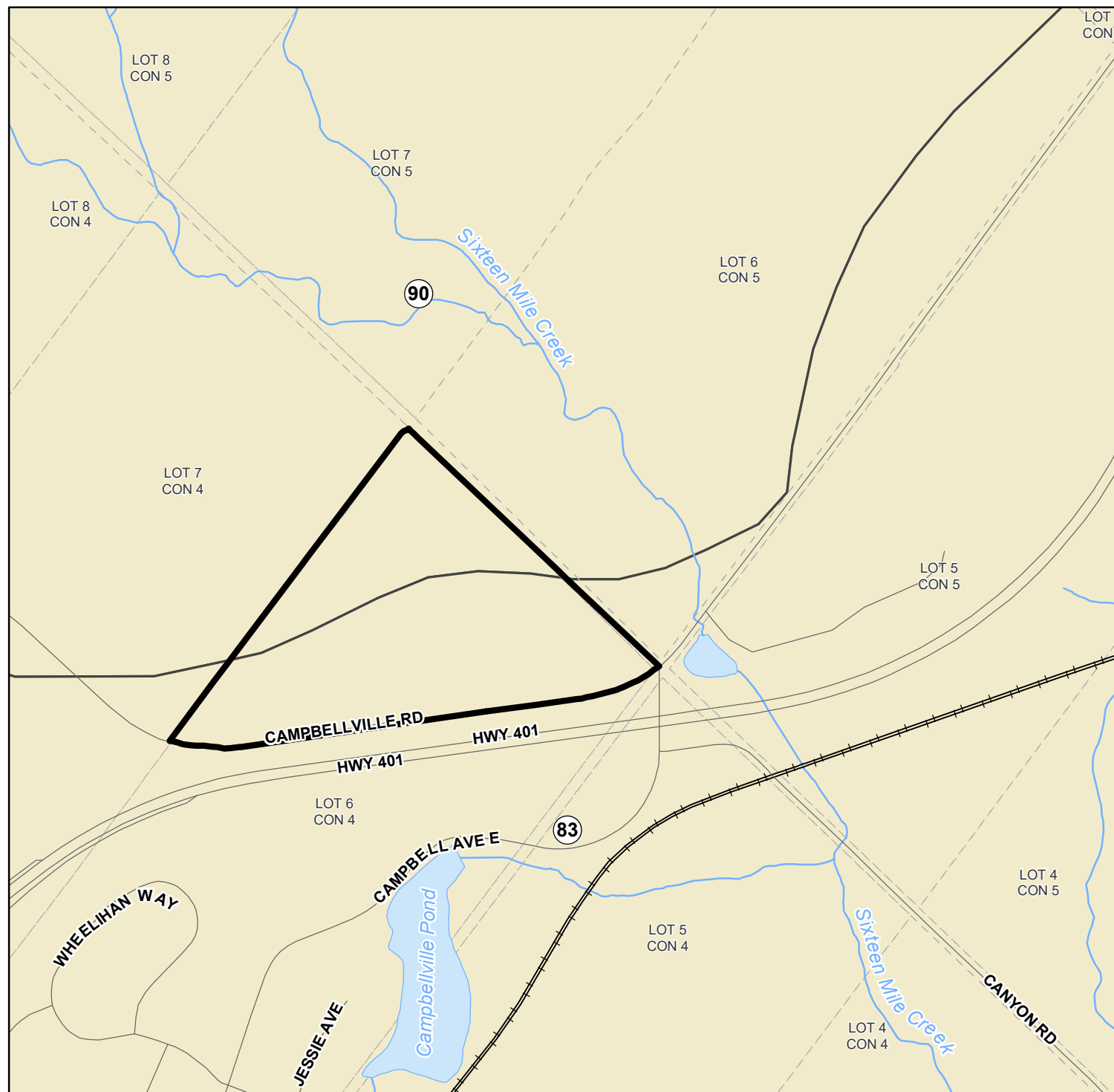
© Queen's Printer for Ontario and its licensors. [2019]
May Not be Reproduced without Permission.





Map 4 Landscape Evaluation Study

Amendment No. PH 222 21
3475 Campbellville (North Pit)
Town of Milton
Regional Municipality of Halton



Area Subject to the Amendment
Landscape Evaluation Study

Average

Roads

Railway - Operational

Waterbodies

Watercourse

Upper Tier Municipality

Lower/Single Tier Municipality

Lot and Concession Boundary

NOTE: The Niagara Escarpment Plan Designation boundaries shown on this map are approximate and subject to confirmation through Site Inspection and the application of the 'Interpretation of Boundaries' section of the Niagara Escarpment Plan

Scale 1:10,000

0 75 150 225 300

Metres

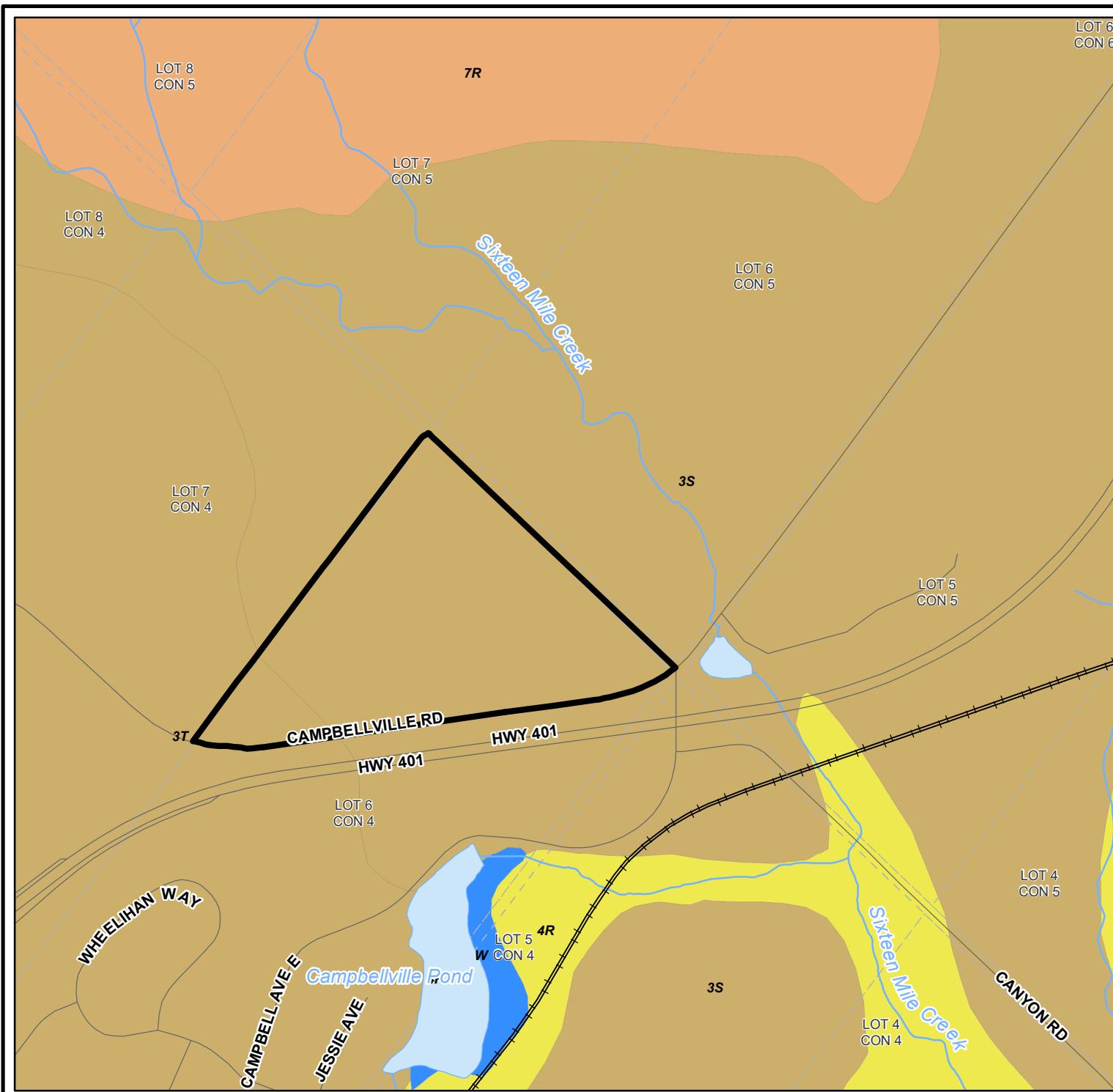
Printed on Jun 29, 2021

THIS IS NOT A PLAN OF SURVEY.
This map is illustrative only. Do not rely on it as being a precise indicator of routes, location of features, nor as a guide to navigation. Base derived from various sources.
Map compiled and produced by the Geographic Information Systems
(GIS) Department of the Niagara Escarpment Commission,
Ministry of Natural Resources

Ontario

© Queen's Printer for Ontario and its licensors. [2019]
May Not be Reproduced without Permission.





Map 5 Soils

Amendment No. PH 222 21
3475 Campbellville (North Pit)
Town of Milton
Regional Municipality of Halton

Area Subject to the Amendment

Roads

Railway - Operational

Waterbodies

Watercourse

Upper Tier Municipality

Lower/Single Tier Municipality

Lot and Concession Boundary

Soils - Canada Land Inventory

Class

3

4

7

Water

Soils - Hydrological Soil Group

Class

A

B

Soils - Drainage

Class

Poorly Drained

Well Drained

Water

Soils - Canada Land Inventory - Ontario Ministry of Agriculture and Food
The soil complex database contains other descriptive information including slope class, Soils - Canada Land Inventory (CLI) ranking, stoniness, drainage class, texture etc. The CLI components of the data layer is generally intended to be used as a tool for broad land use planning decision making, and not necessarily for field-level management.

Scale 1:10,000

0 75 150 225 300

Metres

Printed on Jun 29, 2021

THIS IS NOT A PLAN OF SURVEY.

This map is illustrative only. Do not rely on it as being a precise indicator of routes, location of features, nor as a guide to navigation. Base derived from various sources.

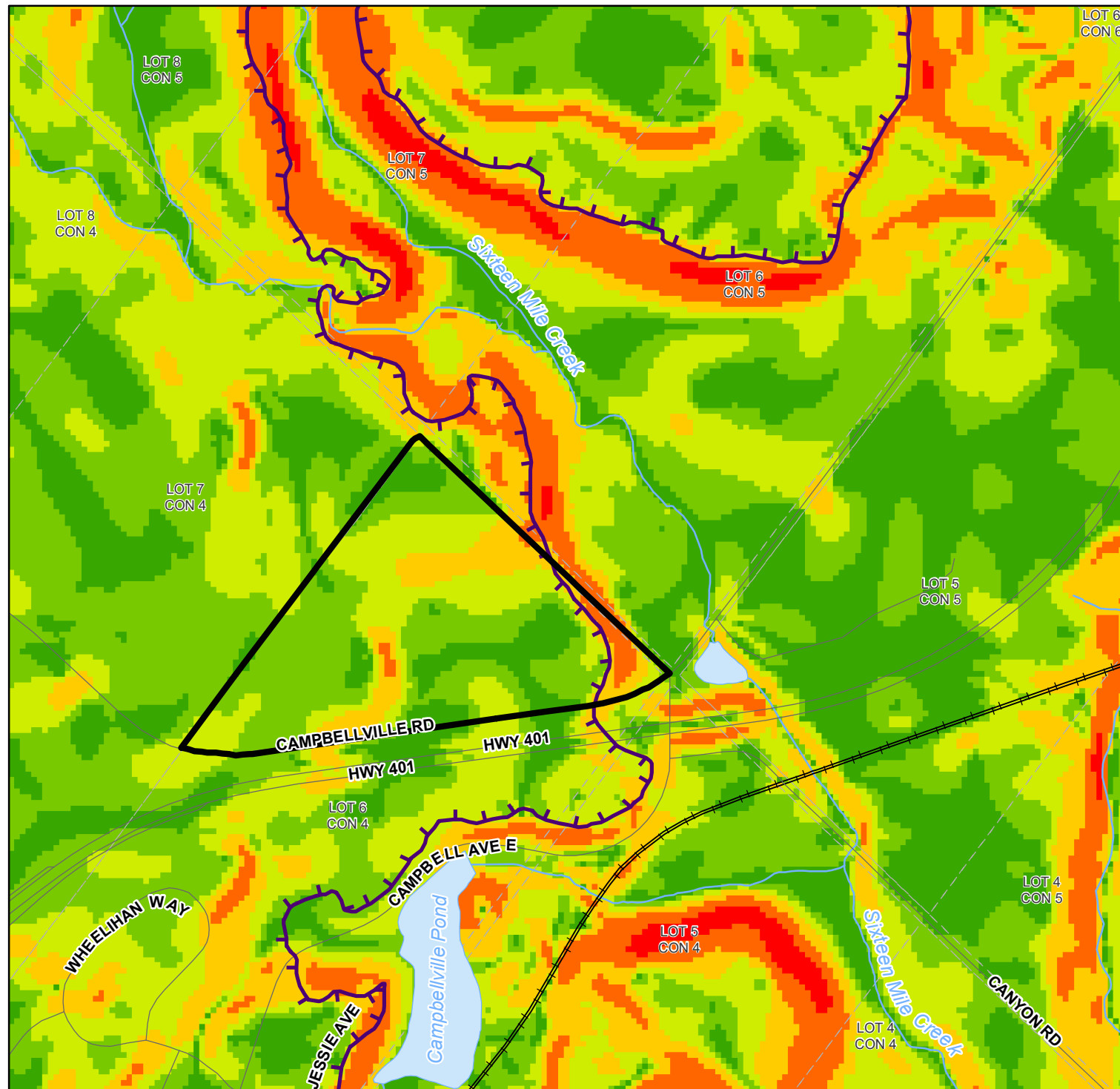
Map compiled and produced by the Geographic Information Systems (GIS) Department of the Niagara Escarpment Commission, Ministry of Natural Resources

Ontario



© Queen's Printer for Ontario and its licensors. [2019]
May Not Be Reproduced without Permission.





Map 6 Slope

Amendment No. PH 222 21
3475 Campbellville (North Pit)
Town of Milton
Regional Municipality of Halton

Area Subject to the Amendment

Slope

- 0 - 1
- 1 - 2
- 2 - 4
- 4 - 8
- 8 - 16
- 16 - 32

Escarpment Brow

Roads

Railway - Operational

Waterbodies

Watercourse

Upper Tier Municipality

Lower/Single Tier Municipality

Lot and Concession Boundary

Soils - Canada Land Inventory - Ontario Ministry of Agriculture and Food
The soil complex database contains other descriptive information including slope class, Soils - Canada Land Inventory (CLI) ranking, stoniness, drainage class, texture etc. The CLI components of the data layer is generally intended to be used as a tool for broad land use planning decision making, and not necessarily for field-level management.

Scale 1:10,000

0 75 150 225 300

Metres

Printed on Jun 30, 2021

THIS IS NOT A PLAN OF SURVEY.
This map is illustrative only. Do not rely on it as being a precise indicator of routes, location of features, nor as a guide to navigation. Base derived from various sources.
Map compiled and produced by the Geographic Information Systems
(GIS) Department of the Niagara Escarpment Commission,
Ministry of Natural Resources

Ontario

© Queen's Printer for Ontario and its licensors. [2019]
May Not Be Reproduced without Permission.

