

# Map 1 Amendment Location and the Niagara Escarpment Plan

PH 224 21  
Milton Quarry East Extension  
Town of Halton Hills  
Regional Municipality of Halton

-  Proposed Amendment boundary (extraction and licence boundary area)
-  Lands Subject to Proposed Site Specific Policy
- Plan Designations**
  -  Escarpment Natural Area
  -  Escarpment Protection Area
  -  Escarpment Rural Area
  -  Mineral Resource Extraction Area
  -  Niagara Escarpment Parks and Open Space System
  -  Roads
  -  Railway - Operational
  -  Waterbodies
  -  Watercourse
  -  Upper Tier Municipality
  -  Lower/Single Tier Municipality
  -  Lot and Concession Boundary
  -  Ownership Boundary

NOTE: The Niagara Escarpment Plan Designation boundaries shown on this map are approximate and subject to confirmation through Site Inspection and the application of the 'Interpretation of Boundaries' section of the Niagara Escarpment Plan

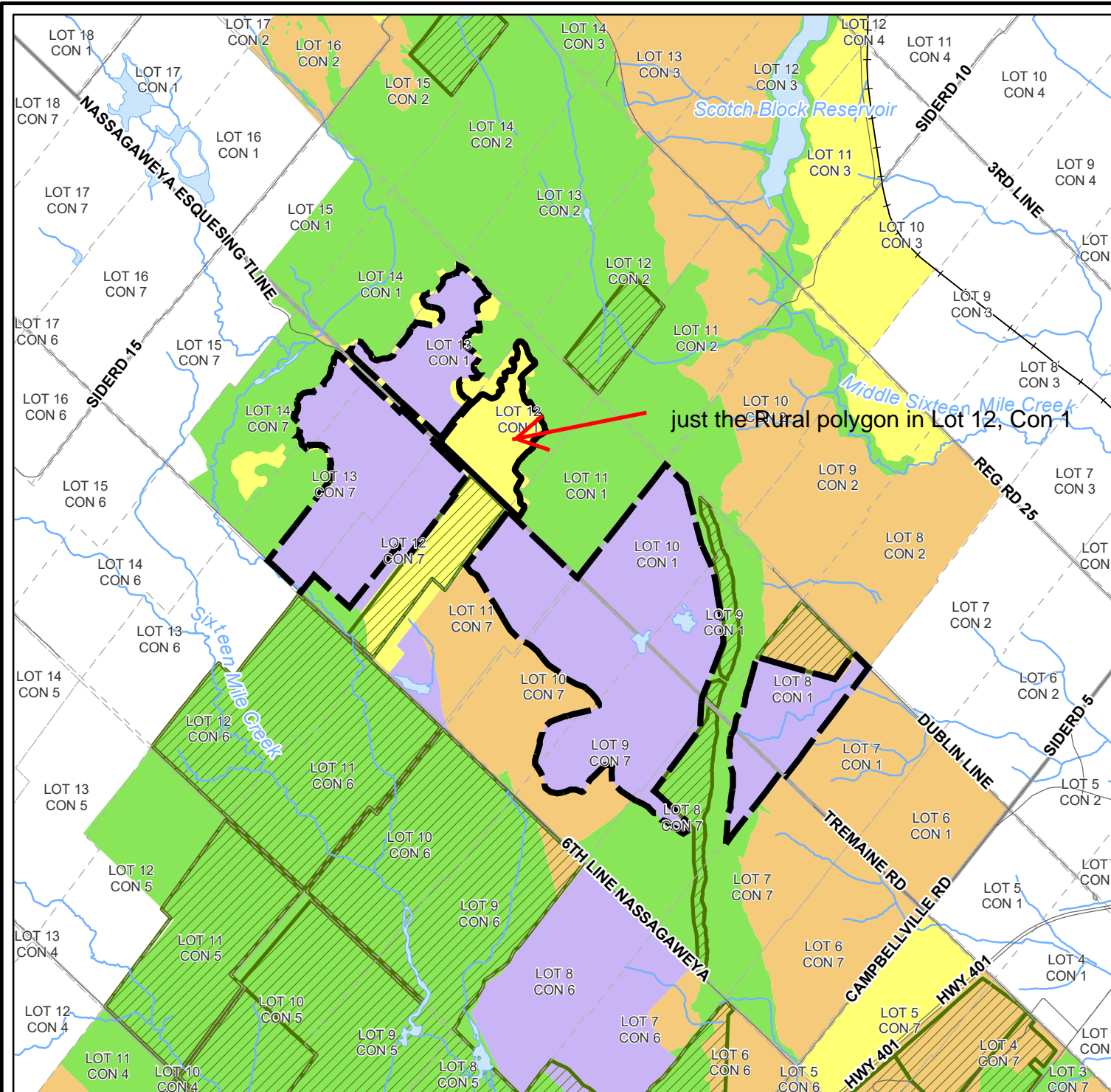
Scale 1:35,000  
0 300 600 900 1200  
Metres

Printed on Apr. 4, 2022

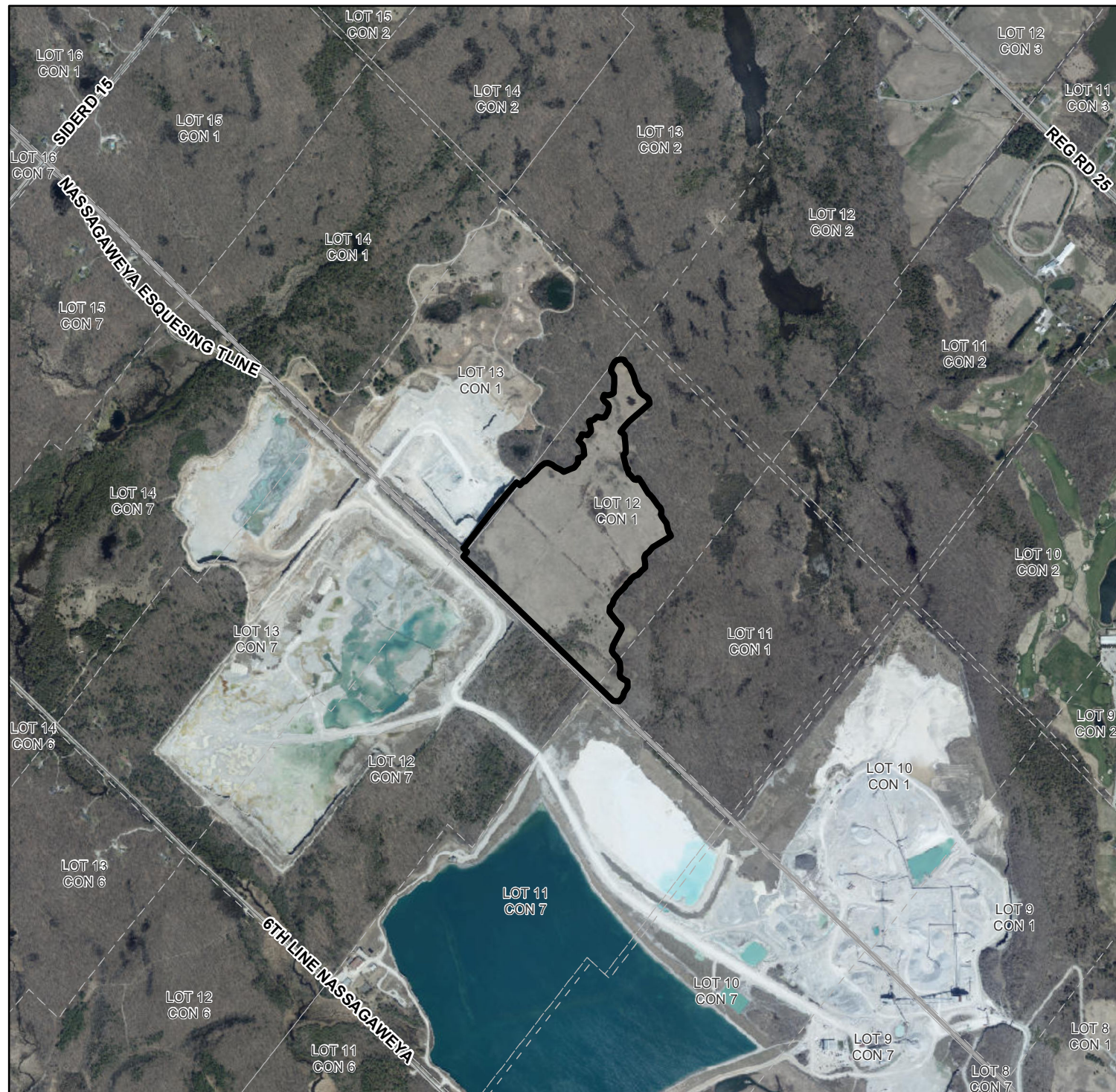
THIS IS NOT A PLAN OF SURVEY.  
This map is illustrative only. Do not rely on it as being a precise indicator of routes, location of features, nor as a guide to navigation. Base derived from various sources.  
Map compiled and produced by the Geographic Information Systems (GIS) Department of the Niagara Escarpment Commission, Ministry of Natural Resources

**Ontario** 

© Queen's Printer for Ontario and its licensors. [2022]  
May Not Be Reproduced without Permission.







# **Map 2** **Orthophoto - 2020** PH 224 21 Milton Quarry East Extension Town of Halton Hills Regional Municipality of Halton

- Proposed Amendment Boundary
- Roads
- Upper Tier Municipality
- Lower/Single Tier Municipality
- Lot and Concession Boundary

NOTE: The Niagara Escarpment Plan Designation boundaries shown on this map are approximate and subject to confirmation through Site Inspection and the application of the 'Interpretation of Boundaries' section of the Niagara Escarpment Plan

Scale 1:18,000  
 0 150 300 450 600  
 Metres

Printed on Mar 14, 2022

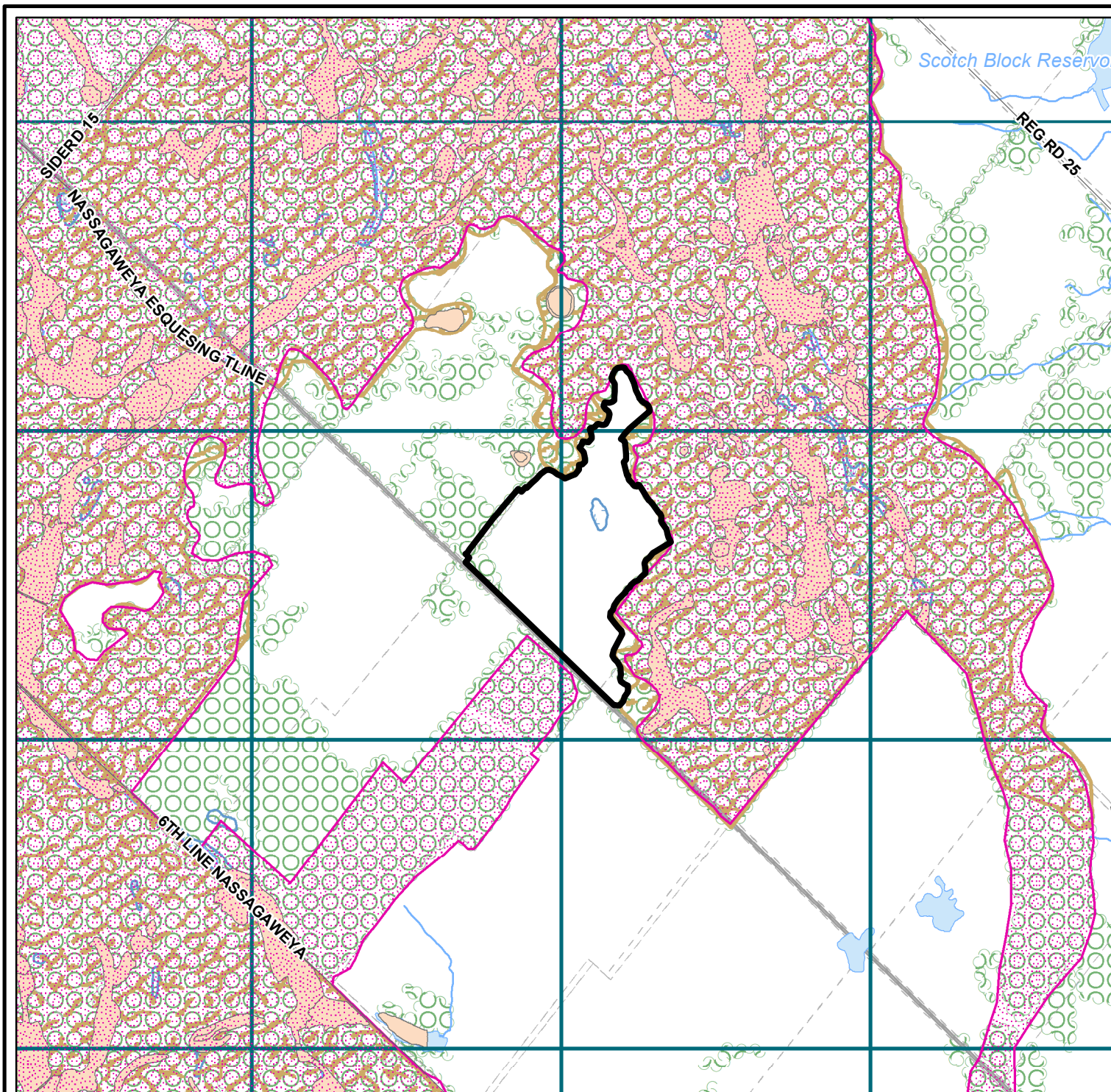
THIS IS NOT A PLAN OF SURVEY.  
 This map is illustrative only. Do not rely on it as being a precise indicator of routes, location of features, nor as a guide to navigation. Base derived from various sources.  
 Map compiled and produced by the Geographic Information Systems (GIS) Department of the Niagara Escarpment Commission, Ministry of Natural Resources



© Queen's Printer for Ontario and its licensors. [2022]  
 May Not be Reproduced without Permission.







## Map 3 Natural Heritage Features

PH 224 21

Milton Quarry East Extension  
Town of Halton Hills  
Regional Municipality of Halton

**Proposed Amendment Boundary**

— Roads

Unevaluated Wetlands

Waterbodies

Watercourse

Upper Tier Municipality

Lower/Single Tier Municipality

Lot and Concession Boundary

Wooded Area

ESA - Halton

Provincially tracked species  
(1km grid)

### Evaluated Wetlands

Evaluated Wetlands

### ANSI - Life Science

Life Science, Provincial

NOTE: The Niagara Escarpment Plan Designation boundaries shown on this map are approximate and subject to confirmation through Site Inspection and the application of the 'Interpretation of Boundaries' section of the Niagara Escarpment Plan

Scale 1:18,000

0 150 300 450 600

Metres

Printed on Apr 4, 2022

THIS IS NOT A PLAN OF SURVEY.

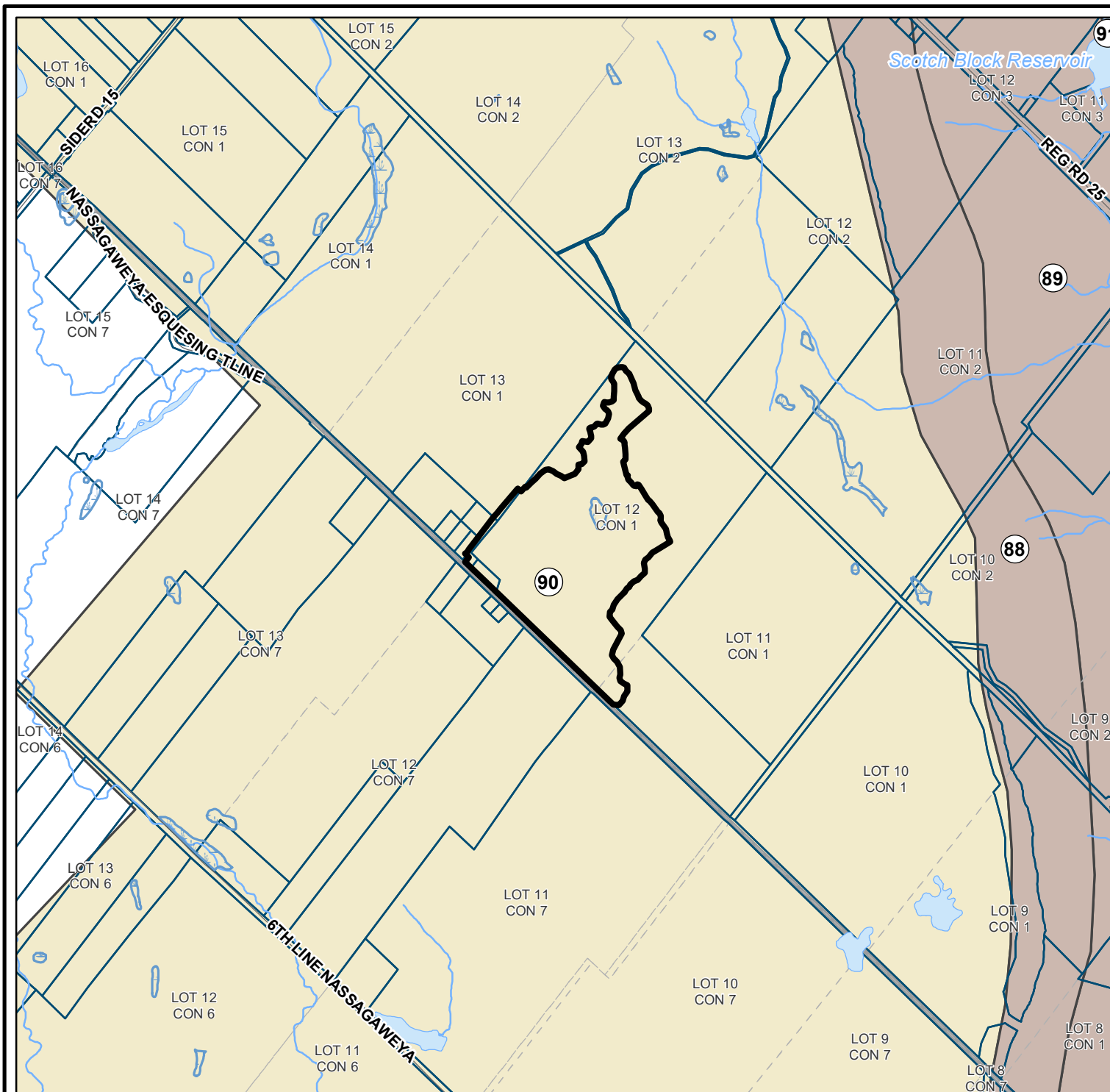
This map is illustrative only. Do not rely on it as being a precise indicator of routes, location of features, nor as a guide to navigation. Base derived from various sources. Map compiled and produced by the Geographic Information Systems (GIS) Department of the Niagara Escarpment Commission, Ministry of Natural Resources

**Ontario**



© Queen's Printer for Ontario and its licensors. [2022]  
May Not be Reproduced without Permission.





# Map 4 Landscape Evaluation Study

PH 224 21  
Milton Quarry East Extension  
Town of Halton Hills  
Regional Municipality of Halton

 Proposed Amendment Boundary

## Landscape Evaluation Study

 Attractive

 Average

 Roads


 Unevaluated Wetlands

 Waterbodies

 Watercourse

 Upper Tier Municipality

 Lower/Single Tier Municipality

 Lot and Concession Boundary

 Ownership Boundary

NOTE: The Niagara Escarpment Plan Designation boundaries shown on this map are approximate and subject to confirmation through Site Inspection and the application of the 'Interpretation of Boundaries' section of the Niagara Escarpment Plan

Scale 1:18,000

0 150 300 450 600

Metres

Printed on Mar 14, 2022

THIS IS NOT A PLAN OF SURVEY.

This map is illustrative only. Do not rely on it as being a precise indicator of routes, location of features, nor as a guide to navigation. Base derived from various sources.

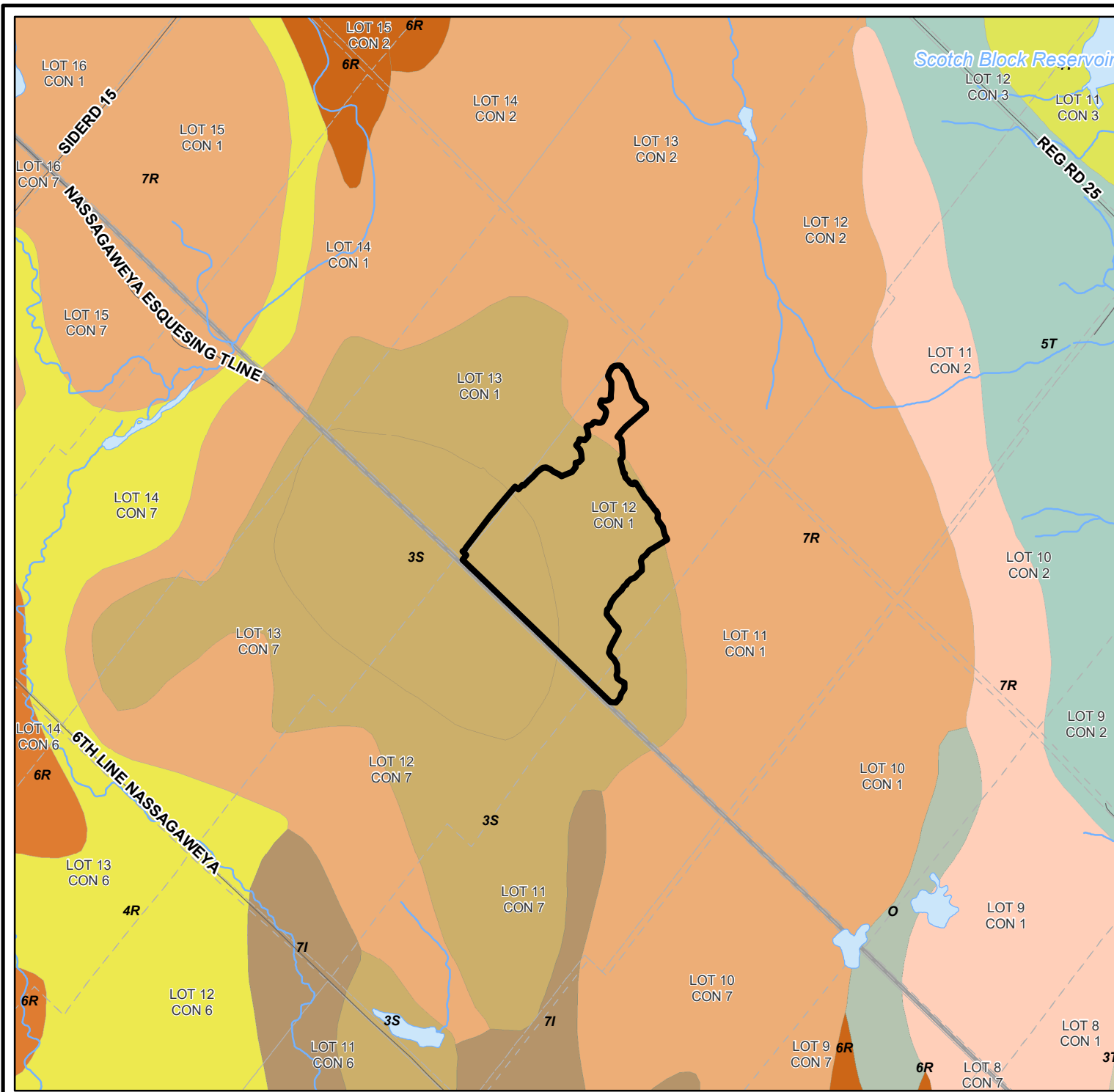
Map compiled and produced by the Geographic Information Systems (GIS) Department of the Niagara Escarpment Commission, Ministry of Natural Resources

Ontario 

© Queen's Printer for Ontario and its licensors. [2022]  
May Not be Reproduced without Permission.







## Map 5 Soils

PH 224 21

Milton Quarry East Extension  
Town of Halton Hills  
Regional Municipality of Halton

Proposed Amendment Boundary

Roads

Waterbodies

Watercourse

Upper Tier Municipality

Lower/Single Tier Municipality

Lot and Concession Boundary

### Soils - Canada Land Inventory

#### Class

3

4

5

6

7

Organic Soil

### Soils - Hydrological Soil Group

#### Class

A

B

C

D

### Soils - Drainage

#### Class

Poorly Drained

Very Poorly Drained

Well Drained

NOTE: The Niagara Escarpment Plan Designation boundaries shown on this map are approximate and subject to confirmation through Site Inspection and the application of the 'Interpretation of Boundaries' section of the Niagara Escarpment Plan

Scale 1:18,000

0 150 300 450 600

Metres

Printed on Mar 14, 2022

THIS IS NOT A PLAN OF SURVEY.

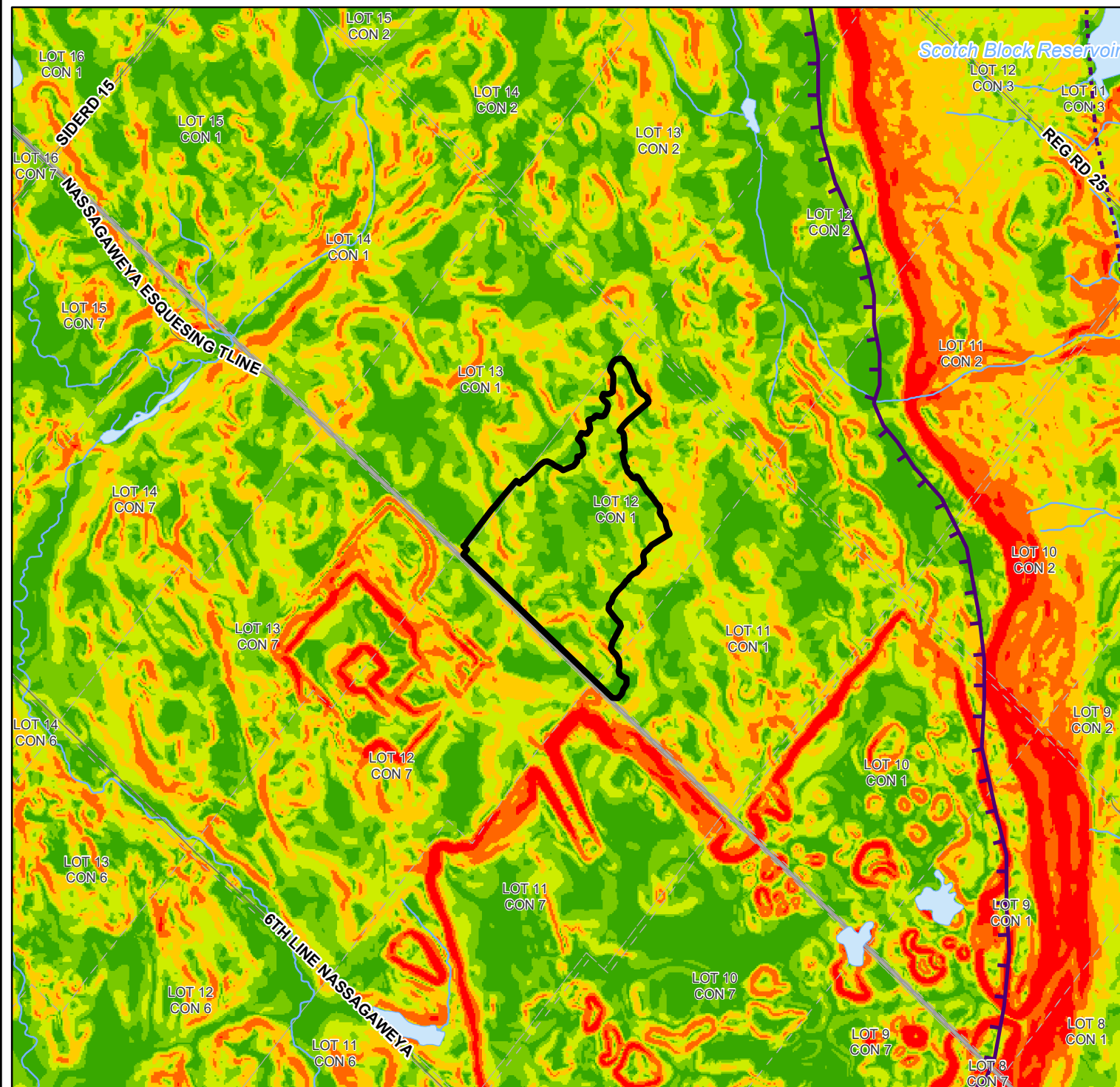
This map is illustrative only. Do not rely on it as being a precise indicator of routes, location of features, nor as a guide to navigation. Base derived from various sources.

Map compiled and produced by the Geographic Information Systems (GIS) Department of the Niagara Escarpment Commission, Ministry of Natural Resources

**Ontario**

© Queen's Printer for Ontario and its licensors. [2022]  
May Not be Reproduced without Permission.





## Map 6

### Slope

PH 224 21

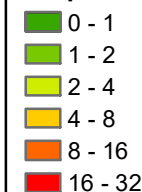
Milton Quarry East Extension

Town of Halton Hills

Regional Municipality of Halton

Proposed Amendment Boundary

### Slope



Escarpment Brow

Escarpment Toe

Roads

Waterbodies

Watercourse

Upper Tier Municipality

Lower/Single Tier Municipality

Lot and Concession Boundary

NOTE: The Niagara Escarpment Plan Designation boundaries shown on this map are approximate and subject to confirmation through Site Inspection and the application of the 'Interpretation of Boundaries' section of the Niagara Escarpment Plan

Scale 1:18,000

0 150 300 450 600

Metres

Printed on Mar 14, 2022

THIS IS NOT A PLAN OF SURVEY.

This map is illustrative only. Do not rely on it as being a precise indicator of routes, location of features, nor as a guide to navigation. Base derived from various sources.

Map compiled and produced by the Geographic Information Systems (GIS) Department of the Niagara Escarpment Commission, Ministry of Natural Resources

**Ontario**

© Queen's Printer for Ontario and its licensors. [2022]  
May Not be Reproduced without Permission.

